

CONTRACT AWARDED TO ENTREPRENEUR FOR CONSTRUCTION OF THE NEW CITY HALL

Hôtel de Ville Passivhaus de la Municipalité de La Pêche



The construction of the new City Hall is a project that started over 5 years ago! The new energy efficient massive wood City Hall in La Pêche is an ambitious construction project driven by a visionary municipal administration and a group of accomplished professionals and consultants.

We are pleased to inform you that at a regular meeting of the [Municipal Council held on March 6, 2023](#), the contract for the construction of the future building was awarded to the company Ed Brunet & Associates Canada Inc.

The City Hall project is an opportunity to develop a model green building, and to make it representative of the Municipality's integrated approach to sustainable development. This building will be certified to the PassivHaus standard.

Recall that the architectural firm BGLA Inc. was awarded a mandate for the construction of the City Hall. This firm has recognized expertise in the field of architecture, energy efficiency and wood structures. It specializes in concepts such as net zero, PassivHaus, LEED rating systems, and other similar methods.

The Passivhaus standard aims to achieve energy efficiency in all types of buildings. Developed in 1990 in Germany, it leads saving 80% of the energy that is used for heating and cooling. It is a concrete action in the fight against climate change that advocates the reduction of energy consumption.

The project's objective is to regroup all services in a single energy efficient building. The building will be extremely airtight. It will consume **six** times less energy than a building that conforms to regularly applied standards.

The new building will feature a solid wood structure with long-span cross-laminated timber (CLT) beam panels, an innovation recognized by the [Cecobois program](#). It will also have an envelope of hyper-insulated walls and roofs made with 100% wood components.

The building will contain the usual functions of a City Hall, including enclosed and open-plan office space, meeting rooms for staff, a service counter for taxes and permits, a large, bright and welcoming lobby, as well as all the usual service spaces required. The large multi-purpose room will be used for Municipal Council meetings and other public events. A section of the hall will be open to the community and to artists and craftspeople for exhibitions.

A new milestone has been reached with the awarding of the contract for the construction of the La Pêche City Hall. By choosing the PassivHaus concept, the Municipality is carrying out a sustainable development project on its territory and is taking concrete steps to be more respectful of the environment.

Municipal Council

- Guillaume Lamoureux**
Mayor
819 456-2161, ext. 1055
g.lamoureux@villelapeche.qc.ca
- Daniel Meunier**
Ward 1
819 598-9496
d.meunier@villelapeche.qc.ca
- Carolane Larocque**
Ward 2
819 209-7338
c.larocque@villelapeche.qc.ca
- Francis Beausoleil**
Ward 3
819 360-9350
f.beausoleil@villelapeche.qc.ca
- Pierre Lebel**
Ward 4
819 456-3604
p.lebel@villelapeche.qc.ca
- Pamela Ross**
Ward 5
613 794-4778
p.ross@villelapeche.qc.ca
- Claude Giroux**
Ward 6
819 459-1344
c.giroux@villelapeche.qc.ca
- Richard Gervais**
Ward 7
819 635-2608
r.gervais@villelapeche.qc.ca

Editor-in-Chief: Patricia De Grandpré
Production: In Médias
Distribution: Municipality of La Pêche
Information: Communications Department, Municipality of La Pêche
1, route Principale Ouest, La Pêche (Québec) J0X 2W0
Tel.: 819 456-2161
Website: www.villelapeche.qc.ca
Email: bulletin@villelapeche.qc.ca
ISSN 1911-7787 (bilingual-print),
ISSN 1911-7795 (en ligne-français),
ISSN 1911-7809 (online-english)



PROJECTS



DOING BUSINESS WITH THE MUNICIPALITY

ENTREPRENEURS LOCAUX



LE SYSTÈME ÉLECTRONIQUE
D'APPEL D'OFFRES DU
GOUVERNEMENT DU QUÉBEC



La Pêche

The Municipality of La Pêche must regularly acquire goods and services to meet the needs of its citizens. As required by law, these calls for tenders are published only on the [Système électronique des appels d'offres \(SEAO\)](#).

The Municipality wishes to inform that calls for tenders will soon be published on the SEAO site and invites businesses to subscribe to be kept informed of calls for tenders.

With respect to the laws and regulations on contract management in effect, the Municipality reminds bidders that they must take into account the administrative delays of the various governmental authorities for obtaining certain documents and authorizations before submitting a service offer for a municipal contract. We encourage local businesses to get the information and take the appropriate steps now as they may encounter significant delays and be disqualified.

Here are some of the most important documents to obtain before bidding on the SEAO:

- Attestation from Revenu Québec (issued within ninety [90] days prior to the deadline for receipt of bids, relating to business tax obligations for the previous year);
- Confirmation of registration with the CNESST (except for self-employed workers without employees);
- Authorization from the Autorité des marchés publics (AMP); any company wishing to conclude public contracts must obtain an authorization. Allow a minimum of 8 weeks.

The Municipality will soon launch public tenders for **snow removal**, repair and drainage works.

Information: approvisionnement@villelapeche.qc.ca

Useful links :

<http://www.seao.ca/>

<http://www.villelapeche.qc.ca/fr/municipalite/appels-offres/>

<https://portailmunicipalfournisseurs.com/00986/fr-ca/>

BESIDES THE BEAUTY OF OUR TERRITORY, HERE'S WHY YOU SHOULD JOIN OUR TEAM:

- We are an open, welcoming environment committed to the well-being of people;
- Our team is dynamic, constantly looking for challenges that mobilize to best practices;
- We are proud to serve our community, to improve our living environment and to ensure that La Pêche is a great place to live.

Consult the current job offers on our website:

www.villelapeche.qc.ca/fr/municipalite/offres-emplois

La Pêche

- ✓ Télétravail
- ✓ Régime de retraite
- ✓ Congés et vacances
- ✓ Salaire concurrentiel
- ✓ Téléconsultation médicale
- ✓ Régime d'assurances collectives

UN EMPLOYEUR DE **CHOIX**

Investir dans un avenir durable!

La Pêche

RAPPEL - ÉCHÉANCE DU PREMIER VERSEMENT DU COMPTE DE TAXES

28 mars 2023

- En ligne ou en personne avec votre institution financière
- Par paiements préautorisés, (formulaire disponible sur notre site internet)
- Par la poste : chèque



THINK ABOUT SAFETY ON THE ICE!

According to the Lifesaving Society, people die from drowning during the winter months while walking, playing field hockey, fishing or snowmobiling on ice. However, there are a few simple things you can do to assess whether it is safe to do activities on frozen waterways:

Look at the colour of the ice

→ Clear blue ice is usually the most resistant.

→ Opaque white ice (snow ice) contains a high percentage of air; its strength depends on its density. White ice that contains little air is almost as strong as blue ice.

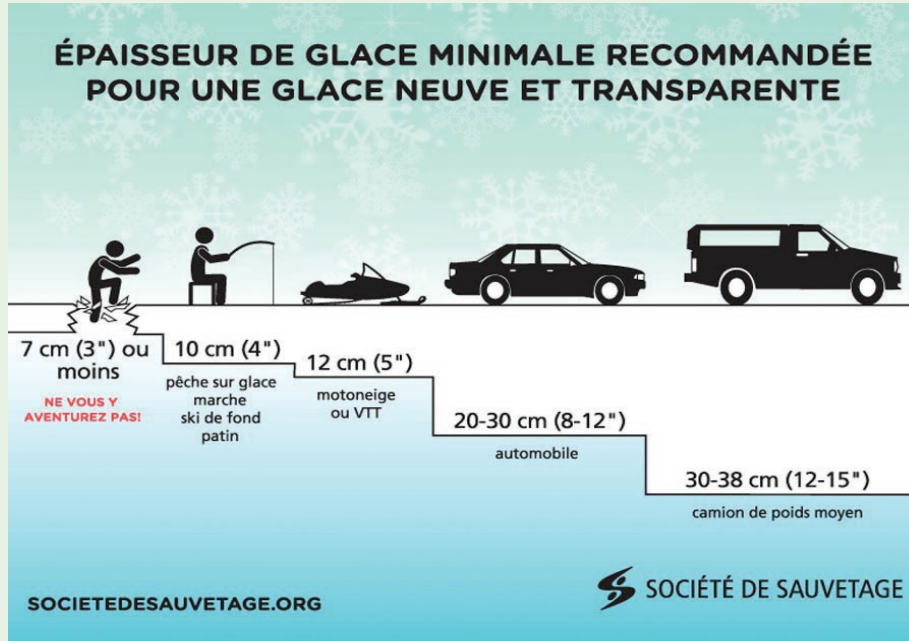
→ Gray ice usually contains water because of thawing and should be considered dangerous.

Examine the environment

✓ The size and depth of the body of water influences ice formation. The deeper the lake, the longer it takes to freeze. Ice near the shoreline forms faster, and melts faster.

✓ Currents thin the underside of the ice. River ice is therefore less solid than lake ice because of current action.

✓ Obstacles, such as a dock or a rock, absorb the sun's heat. They delay



the formation of ice and accelerate its melting.

✓ An ambient temperature that always remains below zero degrees Celsius will result in more solid ice than a temperature that fluctuates around the freezing point.

✓ The melting and refreezing of the ice surface, caused by temperature variations, creates layered ice. The ice therefore has many cracks, which makes it more vulnerable.

✓ Heating by the sun decreases the strength of the ice. It is usually

stronger in the morning than at the end of the day.

✓ Water that accumulates on the ice following precipitation weakens it.

✓ Snow has the same effect as a blanket: it increases the temperature of the ice. Snowfall that

reaches half the thickness of the ice can create a dangerous situation.

✓ The wind can produce some displacement of water that will delay freezing. In addition, the wind can displace the snow and create a blanket (see previous points).

Check the Thickness of the Ice

No type of ice is 100% safe. You should always consider the thickness of the ice. Measure it by drilling a very small hole down to the water in several places. If the ice is 7 centimetres thick or less, don't go on the ice.

Based on information from the Société de sauvetage du Québec (sauvetage.qc.ca).

Important message from your Municipal Fire Department: in case of an emergency, call 911 right away rather than trying to rescue the person and risk a tragedy!

BULKY ITEMS AND COLLECTION

Bulky items are objects that, due to their LARGE SIZE, cannot be collected with household waste. The items will be picked up according to the usual waste collection schedule once a month.

Please place your bulky items at least 1 metre away from your garbage bin to allow for mechanized collection!

Tires, with or without rims, are considered

household hazardous waste (HHW). Bring your tires WITHOUT rims and other HHW to the MRC des Collines-de-l'Outaouais transfer station: <https://mrcdescollines-deloutaouais.qc.ca/en/our-services/environment/#poste-transbordement>. Citizens are entitled to 6 free HHW deliveries per year, not to exceed a total of 100 kg.

Info Collectes

Prochaines collectes des encombrants

3 au 7 avril
1er au 5 mai
12 au 16 juin

La Pêche
Investir dans un avenir durable!

ONLINE TAX ACCOUNT AVAILABLE



La Pêche

Inscris-toi sur Voilà!
pour voir ton compte de taxes en ligne!

COMPTE DE TAXES 2023

Les comptes de taxes sont disponibles sur Voilà!



How to find your tax account efficiently? On Voilà! of course!

Did you know that you have access to your property information in your Voilà! portal?

Is this your first time? No worries, we've prepared a guide for you! Before you begin, have your tax bill (2023 or prior years) in hand.

GO PAPERLESS CHALLENGE

Once you have activated your online tax account, you can receive it only electronically if you wish. Click on the little button provided at the bottom of the "Property" page.

Guide: <http://www.villelapeche.qc.ca/downloads/Finances/Voila-Guide-Propriete.pdf>

PROJECTS



GUIDE FOR OUTDOOR FIRES

IMPORTANT

All fires must be attended at all times
 Hours: Weekdays from 6:00 p.m. to 1:00 a.m.; weekends and holidays from 8:00 a.m. to 1:00 a.m.
PROHIBITED AT ALL TIMES: Burning of grass, leaves, hay, straw, garbage, construction waste, petroleum-based products and any other item deemed to be a pollutant.
 No fires are permitted when winds exceed 15 km/hr or when the SOPFEU index is at "EXTREME".

				
Diameter	1 metre and less	1 to 2 metres	2 to 4 metres	Outdoor fireplace
Authorization	12 months per year	November 1 to May 31	November 1 to May 31	12 months per year
Permit	Not required	Required - valid for 5 days	Required - valid for 5 days	Not required
Clearance	<ul style="list-style-type: none"> 10 m from property lines 10 m from building/tank 2 m from other combustibles 	<ul style="list-style-type: none"> 15 m from property lines 15 m from building/tank 10 m from other combustibles 	<ul style="list-style-type: none"> 30 m from property lines 30 m from building/tank 15 m from other combustibles 	<ul style="list-style-type: none"> 6 m from property lines 6 m from building/tank 2 m from other combustibles
Conditions	<ul style="list-style-type: none"> Extinguishing device at 10 m Max. height 1 m Surrounded by non-combustible materials 	<ul style="list-style-type: none"> Extinguishing device at 10 m Surrounded by non-combustible materials 	<ul style="list-style-type: none"> Extinguishing device at 10 m Surrounded by non-combustible materials 	<ul style="list-style-type: none"> Extinguishing device at 6 m Maximum base diameter of 70 cm Height less than 1.5 m Equipped with a screen and a spark guard Surrounded by non-combustible materials min. 1 m in diameter
PROHIBITED ACCORDING TO THE SOPFEU INDEX 	VERY HIGH EXTREME	VERY HIGH EXTREME	VERY HIGH EXTREME	EXTREME

STATIONNEMENT LAC PHILIPPE
LAISSEZ-PASSER 2023

DATE DE DISTRIBUTION À VENIR





Info La Pêche

Votre municipalité en bref



Un peu de temps pour un brin de lecture?

Rendez-vous sur notre site web pour consulter toutes les éditions numériques de l'Info La Pêche




Investir dans un avenir durable!

ARE YOU REGISTERED FOR THE VOILÀ! CITIZEN PORTAL?

Signing up for the Voilà! Citizen Portal provides you online access to your personalized file. Enter your preferences in your account to receive notifications for the waste collection schedule, news, or events. You can also use the Voilà! Portal to:

- Access your tax account online and receive information on your property;
- Request information, submit a question, or file a complaint. You can track the status of your request directly on the portal!
- Apply for backyard burning and fireworks permits. More permits will be added soon!
- Consult the latest Municipal news and events calendars, as well as the waste collection schedule.

It's secure and easy to use and is available from your desktop or can be downloaded as an application for your mobile.

User guides and videos are available at www.villelapeche.qc.ca, under the "Citizen Portal" tab.

Registration: <https://lapeche.appvoila.com/en/>

To download the application:

✓ Google Play: <https://play.google.com/store/apps/details?id=com.pgsolutions.smartcity>

✓ App Store: <https://apps.apple.com/ca/app/voila/id1110108718?l=fr>



Inscrivez-vous et accédez au portail citoyen !



Requêtes



Permis



Propriété



Actualités et calendrier



La Pêche
Investir dans un avenir durable!



THE YOUTH WELFARE ASSOCIATION OF RUPERT'S ANNUAL GENERAL MEETING

The YWAR Annual General Meeting will be held Tuesday, April 25, 2023, starting at 7:30 p.m. Do you want to enjoy more wonderful events like the Winter Carnival or the Pancake Supper? We need bodies so get involved by volunteering or joining the board. The AGM to be held at the Rupert Community Center, 24 chemin Shouldice.

BINGO

MERCREDI
8 MARS, 5 AVRIL, 10 MAI

LES PORTES VOUS SERONT OUVERTES À PARTIR DE 18H30

LE BINGO DÉBUTERA À 19H00

SALLE COMMUNAUTAIRE DU LAC DES LOUPS
6 CHEMIN LIONEL-BEAUSOLEIL

500\$ EN PRIX

AU PLAISIR DE VOUS VOIR!

La Pêche EN FÊTE

23 AU 25 JUIN 2023

SALLE DESJARDINS
20, rue Raphaël
La Pêche (Québec) JOX 2W0
(Ste-Cécile de Masham)

DÉTAILS À VENIR PROCHAINEMENT!
WWW.DIFFUSEURDESCOLLINES.COM

Patrimoine canadien Canadian Heritage

La Pêche Fier partenaire

Famille Charles IGA Chelsea • Gatineau • Cantley

ACTIVITÉ FAMILIALE DE PÂQUES

Vendredi 7 avril de 9h à 12h
À la salle Desjardins à l'aréna
20 chemin Raphael

Voici ce qui vous y attend ;
un conte, de la musique, une maquilleuse, un balouniste et bien sûr une rencontre avec le lapin.

Par la suite, vous pourrez vous diriger au 3 rue Fleury pour une chasse aux cocos si désirée.

Nous offrirons la vente de collations et breuvages.

FÉDÉRATION CANADIENNE DE LA FAUNE

présentent le

Défi nature urbaine

Gatineau-MRC des Collines 2023

du 28 avril au 1er mai

40 villes participantes au Canada, 1 classement amical

Plus vous consignerez d'espèces fauniques et floristiques croquées dans nos milieux naturels de proximité, plus nos 2 MRC amasseront de points! Sortez entre amis, collègues et élèves, ou en famille!

#1 Inscrivez-vous à l'app ou au site **iNaturalist.ca**

#2 Téléchargez vos photos, vidéos et/ou sons d'espèces

#3 Aidez la région à être #1 au Canada!

Infos: www.fondationforetboucher.ca

Blanche Neige

Heure du conte en ligne disponible tout le mois de mars 2023

L'HEURE DU CONTE AVEC GROS-RAGOUT et Monsieur Guillaume

Pour les petits de 3 à 8 ans

RÉSEAU BIBLIO de l'Outaouais

Une nouvelle histoire tous les mois : grosragout.com/biblio

VARIOUS NEWS



Besoin de vous déplacer ?
Demandez-nous de passer !

Transcollines
À LA DEMANDE

Lundi : 5 h 30 - 22 h 30
Mardi : 5 h 30 - 22 h 30
Mercredi : 5 h 30 - 22 h 30
Jeudi : 5 h 30 - 22 h 30
Vendredi : 5 h 30 - minuit
Samedi : 5 h 30 - minuit
Dimanche : 5 h 30 - 22 h 30

Un transport en commun
personnalisé

L'application Transcollines vous propose
un trajet et des arrêts en fonction de vos
points de départ et d'arrivée.

Un transport en commun
avec réservation

Réservez votre ou vos déplacements
à l'aide de l'application de 2 heures
à 30 jours à l'avance.

TRANSCOLLINES ON DEMAND

Download the new Transcollines mobile application to book your trips today! Note that a web version of the application is also available on your computer or tablet. Visit: transcollines.ca/en/getting-around/on-demand-service

To make a reservation by phone call (819) 456-1114 option 2.

PROCHAINES Séances du conseil

- 3 avril 2023
- 1^{er} mai 2023
- 5 juin 2023

19 H 30

La Pêche

La Pêche
Investir dans un avenir durable !

CONGÉ DE PÂQUES

Les bureaux de la Municipalité
de La Pêche seront fermés le
vendredi 7 avril et lundi 10 avril 2023.

JOYEUSES
Pâques

NOTEZ QUE le jour de collecte est reporté au lendemain.

Info Collectes

Mars - March 2023							Avril - April 2023						
D/S	L/M	M/T	M/W	J/T	V/F	S/S	D/S	L/M	M/T	M/W	J/T	V/F	S/S
			1	2	3	4	2	3	4	5	6	7	8
5	6	7	8	9	10	11	9	10	11	12	13	14	15
12	13	14	15	16	17	18	16	17	18	19	20	21	22
19	20	21	22	23	24	25	23	24	25	26	27	28	29
26	27	28	29	30	31		30						

Mai - May 2023							Juin - June 2023						
D/S	L/M	M/T	M/W	J/T	V/F	S/S	D/S	L/M	M/T	M/W	J/T	V/F	S/S
	1	2	3	4	5	6					1	2	3
7	E+V	E+V	E+V	E+V	E+V	13	4	5	6	7	8	9	10
14	V	V	V	V	V	20	11	12	13	14	15	16	17
21	V	V	V	V	V	27	18	19	20	21	22	23	24
28	29	30	31				25	26	27	28	29	30	

E: Encombrants/Bulky Waste **V**: Résidus verts/ Green Waste

Aucune collecte/No pick-up Ordures/Garbage Recyclage/Recycling Compostage/Composting

Lors d'un congé (en noir), votre collecte sera reportée au lendemain.

La Pêche
Investir dans un avenir durable !

72-HOUR EMERGENCY KIT

The Municipality of La Pêche wishes to remind citizens of actions to take to stay safe and warm in your homes in the event of power outages during a winter storm.

→ Have your 72-hour emergency kit ready. That includes basics like water, food that won't spoil, a flashlight, and a battery-powered radio. For a full list visit:

<https://www.getprepared.gc.ca/cnt/kts/bsc-kt-en.aspx>

→ Get fuel for your generator or wood for the fireplace ahead of time.

→ Make sure you have extra batteries for your devices and that your mobile phones are fully charged.

→ Check in on your neighbours – especially those that are alone or vulnerable.

If the situation requires the activation of emergency measures, citizens will be informed through Voilà! and our Facebook page.

For Hydro-Québec updates: infopannes (pannes.hydroquebec.com/poweroutages) or call Hydro Québec 1-800-790-2424.

Emergency kit

Be ready for 72 hours

- Drinking water - 2 liters per person
- Non-perishable food
- Flashlight + extra batteries
- Fuel for generator or wood for heating
- Check in on your neighbors!

FIRST AID KIT

La Pêche
Investir dans un avenir durable !